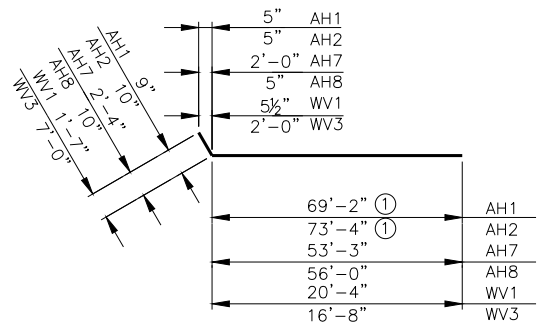
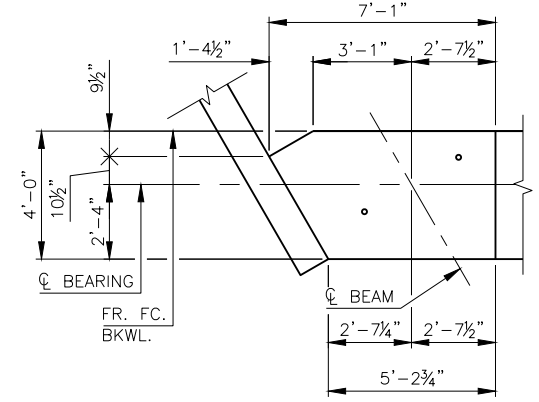
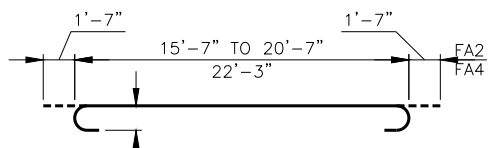
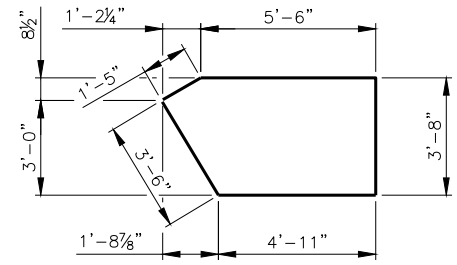


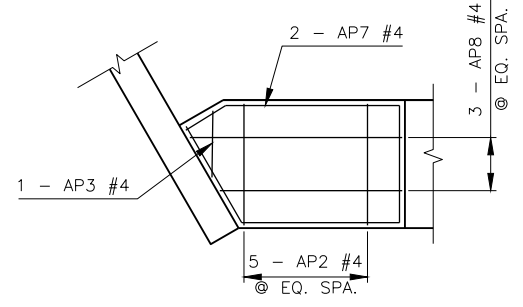
DESCRIPTION	REVISIONS	DATE



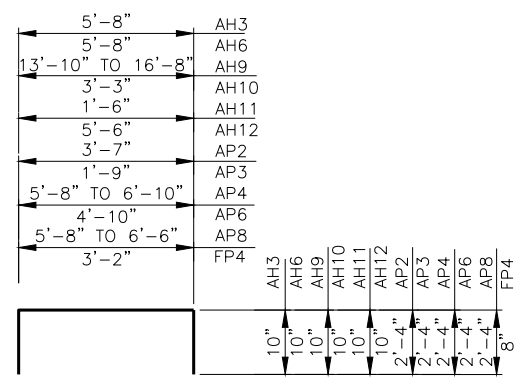
AH1 #5 X 69'-11"  
AH2 #5 X 74'-2"  
AH7 #4 X 55'-7"  
AH8 #5 X 56'-10"  
WV1 #9 X 21'-11"  
WV3 #9 X 23'-8"  
① INCLUDES 3'-0" LAP.



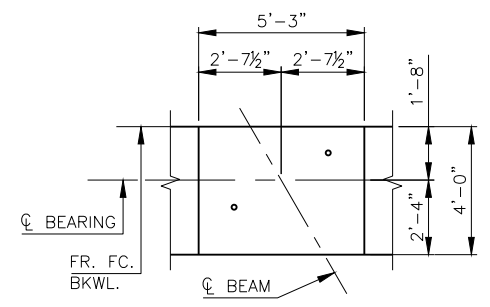
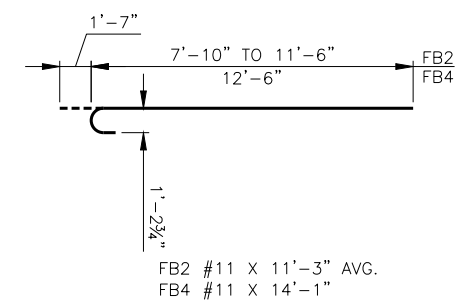
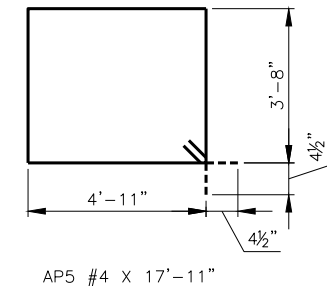
**PEDESTAL PLAN**  
(PEDESTAL NO. 1)



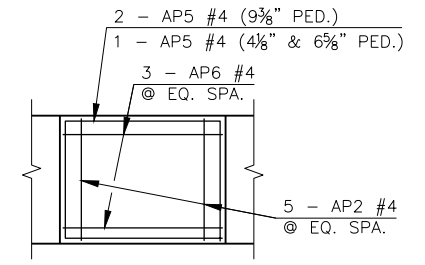
**PEDESTAL REINFORCING PLAN**  
(PEDESTAL NO. 1)



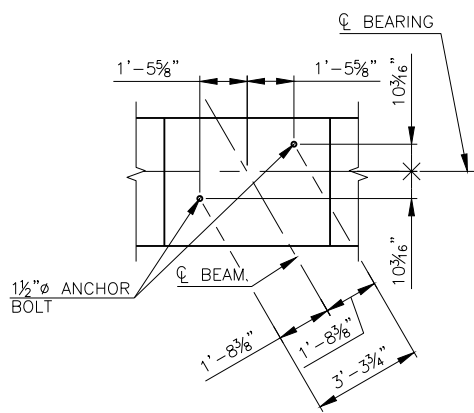
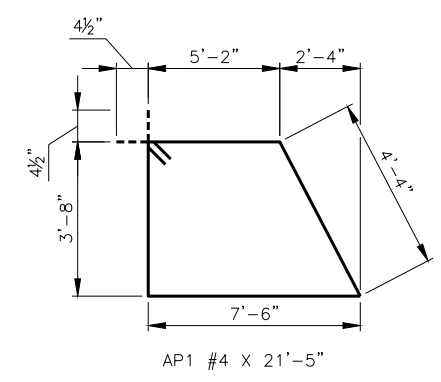
AH3 #4 X 7'-4"  
AH6 #5 X 7'-4"  
AH9 #5 X 16'-11" AVG.  
AH10 #5 X 4'-11"  
AH11 #5 X 3'-2"  
AH12 #5 X 7'-2"  
AP2 #4 X 8'-3"  
AP3 #4 X 6'-5"  
AP4 #4 X 10'-11" AVG.  
AP6 #4 X 9'-6"  
AP8 #4 X 10'-9" AVG.  
FP4 #4 X 4'-6"



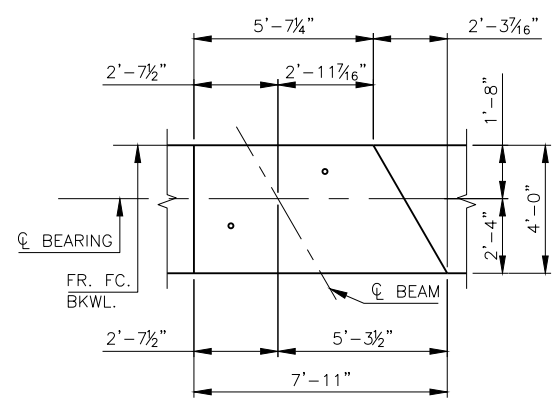
**PEDESTAL PLAN**  
(PEDESTAL NO. 2-4)



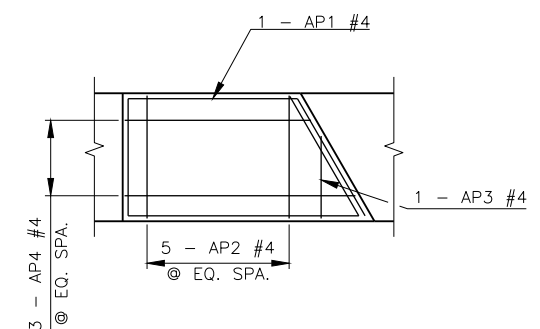
**PEDESTAL REINFORCING PLAN**  
(PEDESTAL NO. 2-4)



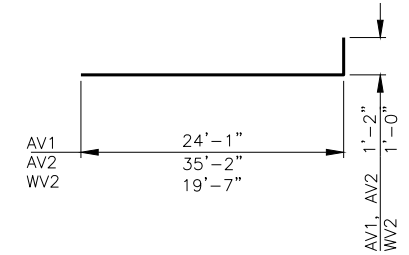
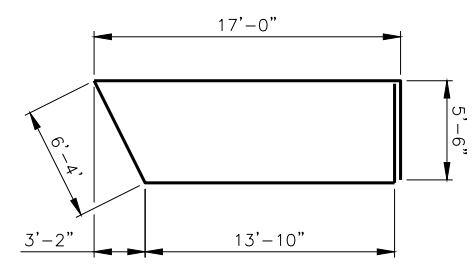
**ANCHOR BOLT LAYOUT**



**PEDESTAL PLAN**  
(PEDESTAL NO. 5)



**PEDESTAL REINFORCING PLAN**  
(PEDESTAL NO. 5)



AV1 #7 X 25'-3"  
AV2 #7 X 36'-4"  
WV2 #6 X 20'-7"

DESIGN	T.A.C.	OKLAHOMA CITY BLVD. OVER	OKLAHOMA COUNTY
DRAWN	R.A.P.	CLASSEN BLVD.	BRIDGE B
CHECKED	T.A.C.	<b>ABUTMENT NO. 2 - PEDESTALS AND BAR BENDS</b>	
APPROV.	T.A.C.		
SQUAD	CEC		
JOB PIECE NO. 17428(88)		SHEET NO. 117	